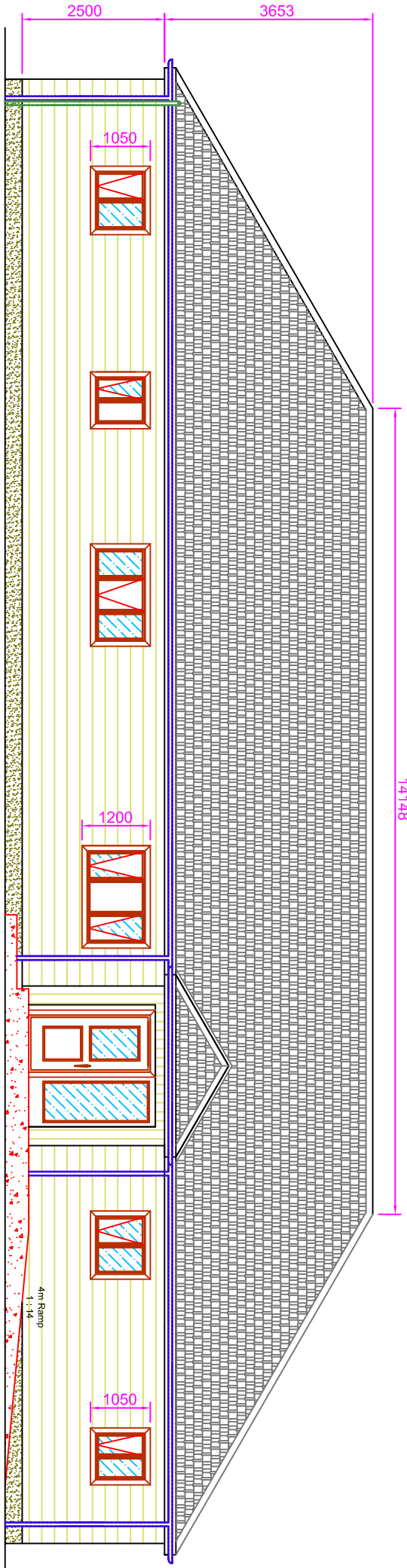
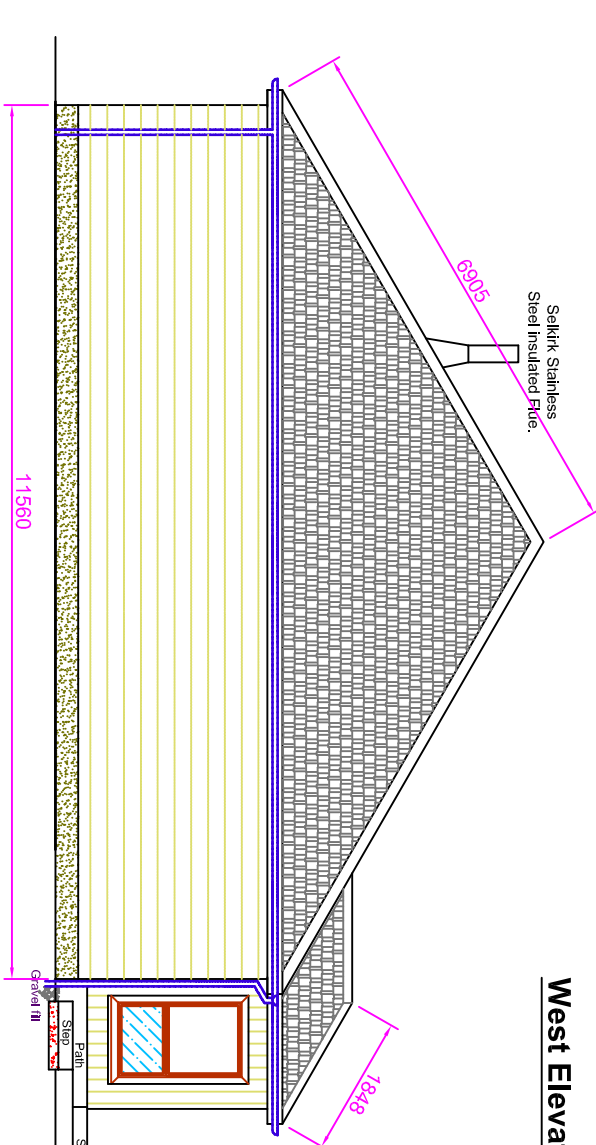


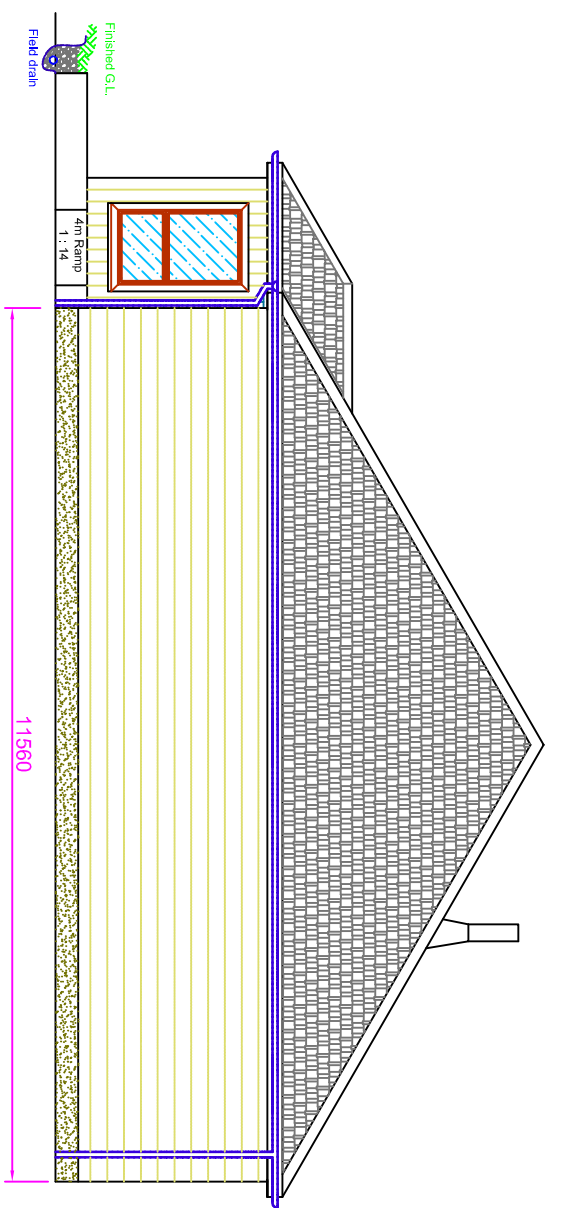
East Elevation



West Elevation



North Elevation



South Elevation

Roof - Sandtoft 'Cassius' Grey clay interlocking tiles to roof over 'Iyveck' breather paper felt & counter battens all on 15mm OSB board. Pitch 30 deg. c/w vented ridge & eaves vents. Trusses designed and supplied by truss manufacturer

Rainwater System - Black 'Marley', or equal, 110mm deeflow gutters c/w 68mm downpipes.

Exterior walls - Siberian larch T&G boards (horiz. on walls, Vert. on porch), black, from DPM to underside soffit on 47x50mm @ 400mm c/c timber battens. Smooth grey render to solum exterior.

Windows - 'Trayd' Forster, or equal. Aluminium Clad timber triple glazed windows. Sills finished with marley creasing tiles bedded in cement, lime, sand mortar. Bedroom opening lights to allow full opening for escape. 'U'Value 0.9W/m2k. 4000mm2 trickle vents to each unit.

NOTES:

REV.	REVISION NOTE	DATE	INITIALS
A	Vertical Siberian Larch cladding added to porch.	27/08/10	ERL

MACGREGOR
CONSTRUCTION
BERNERA
 2A STEINISH, STORNOWAY, HS2 9LX
 TEL: (01951) 704703
 FAX: (01951) 705753

SCHEME: **NEW HOUSE AT 5 KIRKIBOST**
GREAT BERNERA HS2 9LX
 TITLE: **PROPOSED ELEVATIONS**

FORMAT:	SCALE(S):	DATE:
A1	1:50	AUGUST 2010
A3	1:100	

DRAWING NO.: **09/94/01 A**