

H+H Product Datasheet

Celcon Blocks – Hi-Strength Grade

Page 1 of 5

	Strength	Conductivity	Density
Hi-Seven	7.3N/mm ²	0.19 W/mK	750kg/m ³
Hi-Ten*	8.7N/mm ²	0.19 W/mK	750kg/m ³

* Hi-Ten is equivalent to a category II block with a strength of 10.4N/mm*

Celcon Blocks – Hi-Strength Grade



Celcon Block – Hi-Seven
Plain Face - 440mm x 215mm



Celcon Block – Hi-Seven
Scratched marked - 440mm x 215mm



Celcon Block – Hi-Ten
Plain Face - 440mm x 215mm



Celcon Block – Hi-Ten
Scratched marked - 440mm x 215mm

Hi-Strength grades are used principally where higher compressive strengths are required such as in the foundations and lower storeys of three storey buildings, piers under high vertical loads and in multi-storey buildings.

Available in compressive strengths of 7.3N/mm² and 8.7N/mm² they are available in thicknesses from 100mm to 215mm.

Applications

- Internal and external leaf of cavity walls
- Solid walls
- Separating walls
- Flanking Walls
- Partitions
- Multi storey buildings
- Foundations



build with ease



H+H Product Datasheet

Celcon Blocks – Hi-Strength Grade

Page 2 of 5

	Strength	Conductivity	Density
Hi-Seven	7.3N/mm ²	0.19 W/mK	750kg/m ³
Hi-Ten*	8.7N/mm ²	0.19 W/mK	750kg/m ³

* Hi-Ten is equivalent to a category II block with a strength of 10.4N/mm*

Celcon Blocks – Hi-Strength Grade



Celcon Plus Block – Hi-Seven
Plain Face - 610mm x 215mm



Celcon Plus Block – Hi-Ten
Plain Face - 610mm x 215mm



Jumbo Block – Hi-Seven
Plain faced - 610mm x 270mm



Jumbo Block – Hi-Ten
Plain faced - 610mm x 270mm



Muti Plate – Hi-Seven
Plain Face - 610mm x 375mm



Muti Plate – Hi-Ten
Plain Face - 610mm x 375mm

build with ease



H+H Product Datasheet

Celcon Blocks – Hi-Strength Grade

Page 3 of 5

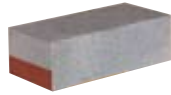
	Strength	Conductivity	Density
Hi-Seven	7.3N/mm ²	0.19 W/mK	750kg/m ³
Hi-Ten*	8.7N/mm ²	0.19 W/mK	750kg/m ³

* Hi-Ten is equivalent to a category II block with a strength of 10.4N/mm*

Celcon Blocks – Hi-Strength Grade



Coursing Unit – Hi-Seven
Plain Face - 215mm x 65mm



Coursing Unit – Hi-Ten
Plain Face - 215mm x 65mm



Foundation Block – Hi-Seven
Plain Face - 610mm x 140mm



Foundation Block – Hi-Seven
Plain Face - 440mm x 215mm

build with ease



H+H Product Datasheet

Celcon Blocks – Hi-Strength Grade

Page 4 of 5

Face size	Hi-Seven 215mm x 65mm			Hi-Ten 215mm x 65mm	
	Block Thickness (mm)	100	115	140	100
Block Weight at 3% (kg) [†]	1.05	1.23	1.47	1.05	1.47
Block Weight (kg) ^{††}	1.24	1.42	1.73	1.24	1.73
Pack Weight (kg)*	371	427	519	371	519

Face size	Hi-Seven 440mm x 215mm					Hi-Ten 440mm x 215mm	
	Block Thickness (mm)	100	115	140	150	215	100
Block Weight at 3% (kg) [†]	7.3	8.4	10.2	11.0	15.7	7.3	10.2
Block Weight (kg) ^{††}	8.4	9.6	11.7	12.6	18.0	8.4	11.7
Pack Weight (kg)*	837	867	820	879	900	837	820

Face size	Hi-Seven 610mm x 215mm		Hi-Ten 610mm x 215mm	
	Block Thickness (mm)	100	140	100
Block Weight at 3% (kg) [†]	10.1	14.2	10.1	14.2
Block Weight (kg) ^{††}	11.6	16.2	11.6	16.2
Pack Weight (kg)*	696	650	696	650

Face size	Hi-Seven 610mm x 140mm	Hi-Ten 610mm x 140mm	
	Block Thickness (mm)	215	100
Block Weight at 3% (kg) [†]	14.2	12.7	17.8
Block Weight (kg) ^{††}	16.2	14.6	20.4
Pack Weight (kg)*	569	700	653

Face size	Hi-Seven 610mm x 270mm		Hi-Ten 610mm x 270mm	
	Block Thickness (mm)	100	140	100
Block Weight at 3% (kg) [†]	12.7	17.8	12.7	17.8
Block Weight (kg) ^{††}	14.6	20.4	14.6	20.4
Pack Weight (kg)*	700	653	700	653

* Pack weight excludes pallet.

† Block weights calculated at 3% moisture content by weight.

†† Blocks weights at typical moisture content when laid. (Some manufacturers may quote weights which have not allowed for this.)

20.4 Bold figures indicate that the product is above single person repetitive manual handling limits.

All shaded areas indicate that the product is a stock item at all factories, other sizes can be made to order subject to minimum quantities.

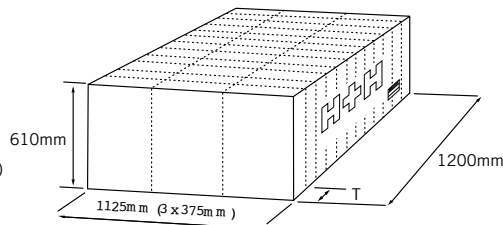
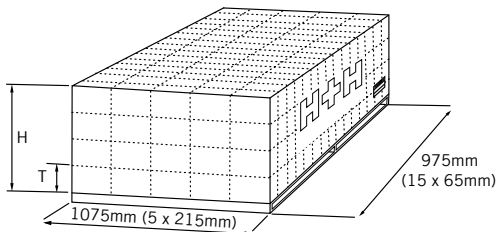
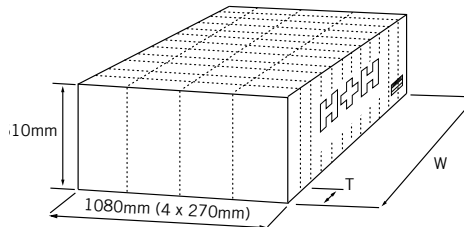
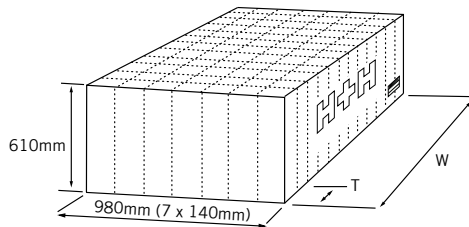
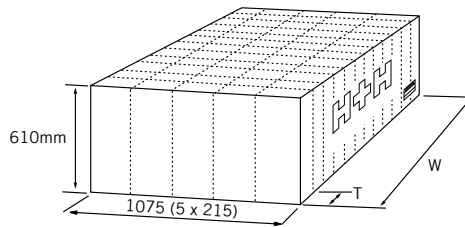
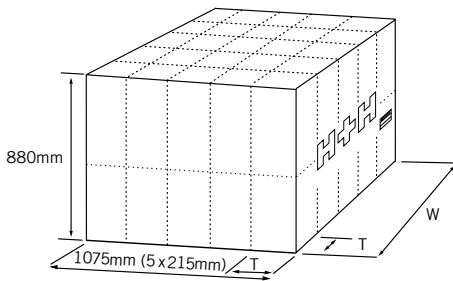
build with ease



H+H Product Datasheet

Celcon Blocks – Hi-Strength Grade

Face size	Hi-Seven 610mm x 375mm	Hi Ten 610mm x 375mm
Block Thickness (mm)	100	100
Block Weight at 3% (kg) [†]	17.7	17.7
Block Weight (kg) ^{††}	20.0	20.0
Pack Weight (kg) [*]	729	729



For further information and to check our most up-to-date product range please visit our website www.hhcelcon.co.uk or contact the following departments:

Sales

For sales enquiries or to find your local stockist please contact

Tel: 01732 886444

Fax: 01732 887013

Technical

For technical enquiries please contact

Tel: 01732 880580

Fax: 01732 880581

Email: technical.services@hhcelcon.co.uk